

ASSESSMENTS: AN OVERVIEW

Part of our school year is dedicated to tests that satisfy federal and/or state requirements. Below are some Frequently Asked Questions and answers to help families recognize the importance of these tests. The state assessments are as follows:

- **ACCESS for ELL:** The English Language Learner proficiency test
- **MCA:** Minnesota Comprehensive Assessments
- **MTAS:** Minnesota Test of Academic Skills

Q: Why do we participate? While no single test can give a complete picture of your child's attainment of the standards, having your child take the statewide tests provides parents, educators, administrators and policy makers with a snapshot of achievement and where additional resources might be needed. Your child's participation is important to ensure schools and districts receive recognition for success as well as access to the targeted resources they need to help all students succeed and to ensure

fidelity in implementing the Minnesota Academic Standards.

Q: What do the results mean? Test results identify your child's mastery of the Minnesota Academic Standards for the respective content areas of Reading, Mathematics and Science. For English Learners, the results indicate your child's mastery of Minnesota's English Language Proficiency Standards. All tests provide an overall score and will be broken into categories to show how well your child performed in each area. MCA Math and Reading results also provide an indication of a student's readiness for career and college.

Q: When will my child take the state tests? While the actual dates and times for each assessment and grade level will be released at the end of March, assessments will be given during the following timeframes. Please be sure to plan accordingly to make sure your student is in attendance during these times.

STATEWIDE REQUIRED ASSESSMENTS	MCA READING	MCA MATH	MCA SCIENCE	MCA MAKEUPS	MTAS	ACCESS FOR ELL
Elementary Grades 3 & 4	April 16 - 20	April 23 - 27		April 30 - May 4	March 5 - May 4	
Middle School Grades 5-8	April 23 - 27	April 30 - May 4	May 7 - 11 **Grades 5 & 8 only**	Will run concurrently with general testing.	March 5 - May 4	
High School Grade 10 Reading & Science Only	April 17		March 6 for students who took Biology 1st semester May 2-3 for students who took Biology 2nd semester	Will run concurrently with general testing.	March 5 - May 4	
High School Grade 11 Math Only		April 17		Will run concurrently with general testing.	March 5 - May 4	
All Grades K-12						March 5 - 23

Q: How can my child prepare for testing?

- Item samplers are available at the following link for MTAS & MCA Math, Reading and Science assessments:
<http://minnesota.pearsonaccessnext.com/item-samplers/>
- Encourage your child to do well, but don't put undue pressure on him/her. Helping your child to relax, focus, and think positively will lead to better success.
- Encourage your child to relax before bedtime and ensure that your child gets enough sleep on the night before a test.
- Ensure that your child eats a healthy, well-balanced breakfast on the day of the test.
- Write test dates on your family calendar to assist in preparation.
Site Calendars are posted online:
www.sartell.k12.mn.us/learning/assessment-data
Detailed Assessment Calendars by building will be available by end of March 2018.

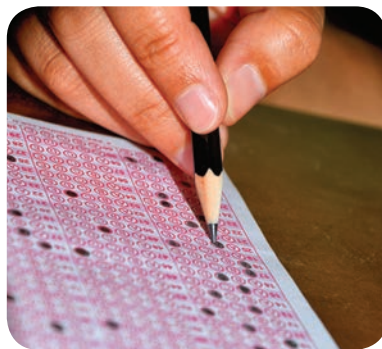
ADDITIONAL UPCOMING ASSESSMENTS

This year SHS will again be offering the ACT Test with Writing for interested juniors on April 3, 2018. Please note: We used to require all students to test but due to changes at the state level, this year it is optional.

Registration is required and closed on December 15. If you missed the deadline and are still interested in taking the ACT on April 3, please contact Dawn Brown at brown@sartell.k12.mn.us.

PLEASE NOTE:

- Students who choose not to test will go to class as normal.
- Once payment is made, students are committed to test. We have to order the tests early and cannot order an overage.
- Students who are looking at participating in Division 1 athletics must test on a National Test Date; this test date does not qualify. National Test Dates are at www.actstudent.org. Sartell offers the National Test dates at the high school in September, October, April, June, and July.
- Students who are testing with us on April 3 must attend a pre-administration session before testing. Information will be sent out to students and parents prior to this time.



For more information regarding Districtwide assessments, please contact District Assessment Coordinator Marie Pangerl at marie.pangerl@sartell.k12.mn.us.